



*Swirl-way*<sup>®</sup>  
Kensington<sup>™</sup>



Rectangular Whirlpool



Model 5016  
Shown in White

A touch of ornate design on each corner gives the Kensington<sup>™</sup> whirlpool, a hint of pure classic romance for any bath or master suite. Equipped with an eight-jet hydro-massage system and powered by a 2 HP pump, the Kensington is equipped to please even the most discriminating homeowner.

## Features

- 42" x 68" Rectangular Whirlpool
- Luxury Package: SimpleSelect<sup>™</sup>, Four Button Control, Ten-Speed Pump with Massage Mode, In-Line Heater and MoodScape<sup>™</sup> Light
- One Offset Back/Foot Jet at Each End for the Bather(s) to Enjoy an Invigorating Hydro-Massage
- Six Micro Directional Jets for the All Over Body Hydro-Massage
- Relaxing Upper Leg and Hip Massage from the Side Jets
- Micro Directional Jets are Directionally Adjustable and Interchangeable with the Micro VSR (Variable Speed Rotating) Jet.
- The Force of Each Micro Directional Jet is Individually Adjustable
- Sculpted Ledge Perfect for the Placement of the Whirlpool Fill Faucet
- Cable Operated Drain in Color-Match, Chrome, Everbrass/PVD or Brushed Nickel
- Powerful 2 HP Pump System Creates an Invigorating Whirlpool Action
- Dual Air Controls for the Ultimate Jet Power Control
- Two Contoured Pillows in Your Choice of White, Bone or Biscuit
- Trim Finish in Your Choice of Color-Match, Chrome, Everbrass/PVD or Brushed Nickel
- Outstanding Protection – Mansfield<sup>®</sup> Limited Ten Year Warranty
- Available in White, Standard, Premium and Designer Colors (Consult Price Book for Specific Colors)

## Model Numbers

Order No.	Description	Approx. Wt.
5016	42" x 68" x 22-3/4" Rectangular whirlpool Specify color and options when ordering.	110 lbs. (49 kg)
SWA215	Anti-microbial acrylic (White, Bone or Biscuit)	



### Rectangular Whirlpool

## Features and Upgrades

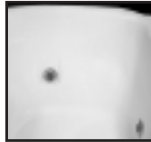
#### Micro Directional Jets

Eight micro jets, adjustable in both direction and intensity, allows you to control your total hydromassage experience. Available in Color-Match, Chrome, Everbrass (PVD) or Brushed Nickel.



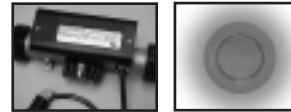
#### Offset Directional Back Jets

A micro jet offset at each end, great for a back or foot massage. The user(s) controls both direction and intensity.

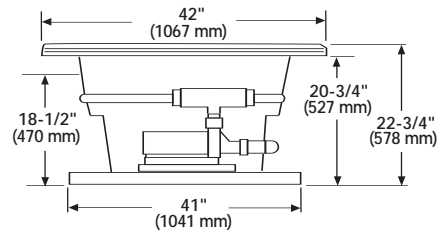
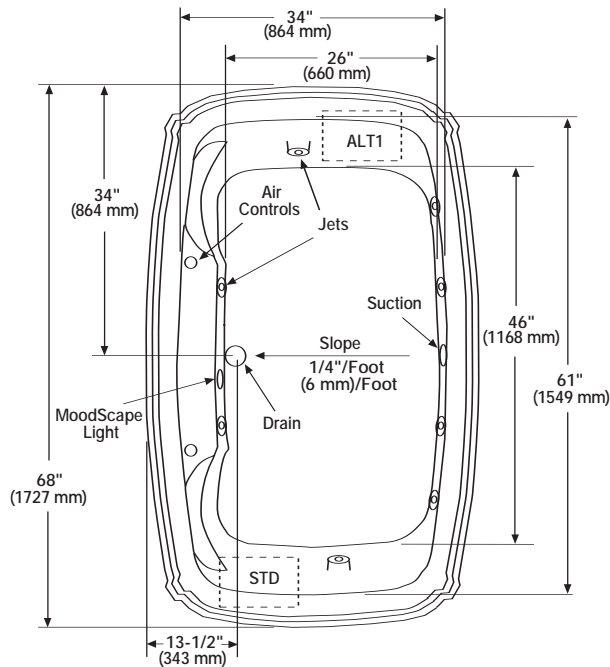


#### Luxury Package

A SimpleSelect™ control, solid state-of-the-art, four function control with LCD display. Controls on/off, ten-speed pump, massage action, and MoodScape™ light. Package includes the solid state in-line heater and MoodScape™ light.



## Technical Information



Pump locations are shown for clarity.  
STD-standard pump location.  
ALT1 - optional alternate pump location.

**Note:** Nailing flange not available on this unit.

**Installer Note:** Due to the freeform shape of the tub shell, it is recommended that the tub be on the job before making the final cut-out for drop-in installation.

**Note:** Rough-in measurements may vary 1/4" (6.4 mm ±).

#### Specifications

Dimensions 42" x 68" x 22-3/4"  
Material Acrylic, fiberglass reinforced  
Construction Self-contained, pre-plumbed whirlpool bath with heat-bent rigid PVC Pipe, mounted on a pre-leveled thermoformed, drip pan base  
Pump Motor 2 HP, Ten-speed, 120 volt, 60 HZ, 13.5 AMP, Pre-mounted  
Electrical Requirements Two separate 120 volt, 20 AMP, GFCI protected circuits

Number of Jets Eight  
Air Volume Control Two  
Water Capacity 65 gal. max., 55 gal. min. (247 liters/209 liters)  
Floor Loading 47 lbs./sq. ft. (229 kg/m<sup>2</sup>)  
Shipping Weight 172 lbs. (78 kg)  
Warranty Limited ten year

These dimensions are nominal and are subject to change without prior notice.

When tested for compliance to the requirement of ANSI A112.19.7M and A112.19.8M for "Whirlpool Bath Appliances" and ANSI Z124 for "Plastic Bathtub Units" the tested units are found to comply and are acceptable for listing under the Terralab Engineers, Inc. follow-up service. Listed Number 15197.

Certified for permanent electrical supply connection only.

**Mansfield**  
Performance For A Lifetime®

Mansfield® Plumbing Products LLC • Sales Services Toll Free 800-999-1459 • Fax 903-657-3450  
Website: [www.mansfieldplumbing.com](http://www.mansfieldplumbing.com) • Email: [custserv@mansfieldplumbing.com](mailto:custserv@mansfieldplumbing.com)